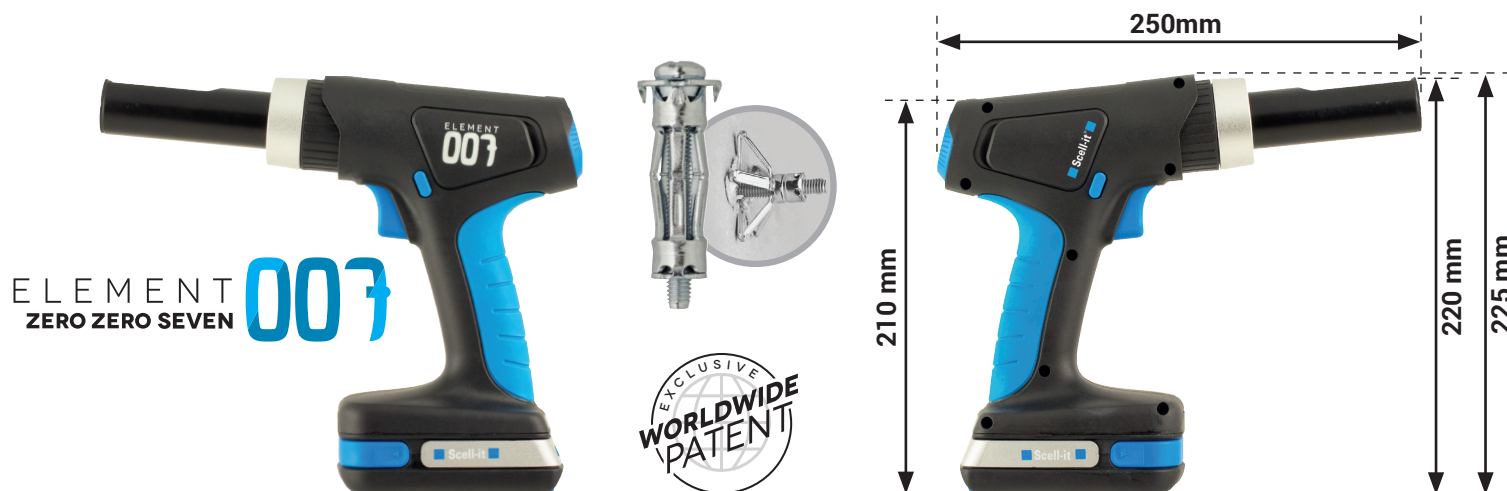


CORDLESS SETTING TOOL FOR HOLLOW WALL ANCHOR

E-007



SPECIFICATIONS

Capacity:
hollow wall anchor
of M4 to M8

Traction power:
6,000 N

Stroke:
4-40 mm

Weight (incl. battery):
1.30 kg

Autonomy:
1 battery charge =
500 hollow wall anchor

Battery:
18 V Li-ion - 2.0 Ah with
charger indicator.

Charger:
18V - battery charging time
2.0 Ah = 100% in 30 minutes

Warranty:
1 year

REFERENCES

REFERENCE	CONTENTS			
	CORDLESS SETTING TOOL E-007	BATTERY 18V LI-ION - 2.0AH	QUICK CHARGER 18V	RIGID CARRYING CASE
E-007-1XBAT	1	1	1	1
E-007-BODY	1			
E-BATT		1		
E-CHARG			1	

Rigid
carrying case



FEATURES

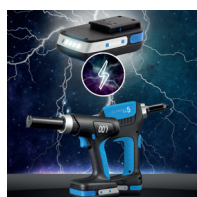


STROKE SETTING KNOB:

- 4 TO 40 MM
- PITCH = 1.2 MM



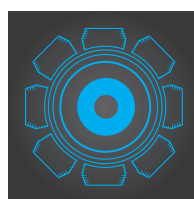
PATENTED TOOL, UNIQUE WORLDWIDE.
PATENT N° FR2010727



SAME BATTERY AND CHARGER AS
OTHER ELEMENT TOOLS



FAST CHARGE IN 30 MIN



BRUSHLESS MOTOR (COAL FREE):

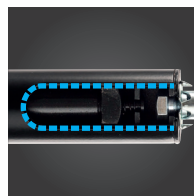
- INCREASE DURABILITY (REDUCES WEAR)
- LESS ENERGY (BETTER AUTONOMY)
- NOISE REDUCTION



3 LEDS TO ILLUMINATE THE WORK ZONE



SMOOTH TRIGGER AND GRIP



LONG OBLONG OPENING TO PREVENT
TOOL BLOCKED ISSUE

OPERATING INSTRUCTIONS



- | | |
|--------------------------|------------------------------|
| 1 Puller | 5 Battery charge test button |
| 2 Stroke setting dial | 6 Battery charge indicator |
| 3 Trigger | 7 LED lights |
| 4 Unlock battery buttons | 8 Reverse button |

• ADJUSTING THE STROKE:

Use the stroke setting knob **2** on the back of the E-007:

- The stroke range is 4 to 40mm
- Each pitch is 1.2mm



In general, the stroke required for a perfect installation depends on the length of the hollow wall anchor.

But this can vary according to the different designs of the HWA on the market.

ADVICE

Refer to the table for recommended stroke settings.

Blank test a HWA and adjust the setting if necessary.

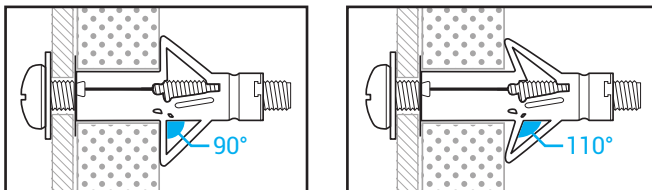
HWA LENGTH	RECOMMENDED STROKE SETTING (data for information only)
mm	mm
23	8-12
33-37-40	16-18
46-47-50-53	24-26
63-66	24-26-28
75	38
80	40

• WARNING:

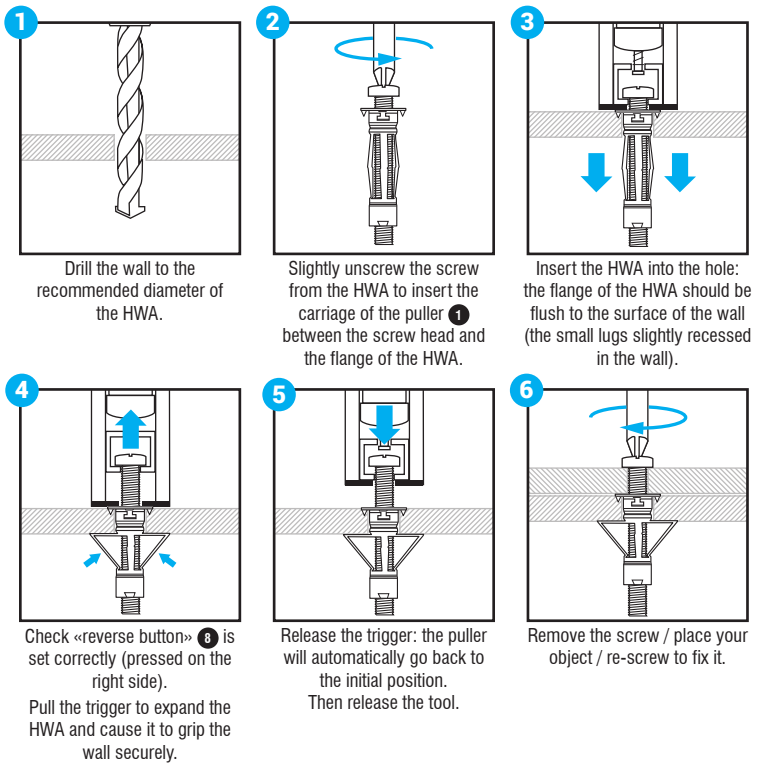
E-007 does not have a clutch system. If the stroke is set too high, it could lead to damage of the anchor or the plasterboard wall.

To avoid this, it is strongly recommended to carry out a «blank» test on a sample wall before installing the anchor on the wall.

A good installation will be a deformation of the anchor legs between 90° to 110° (see pictures below), which allows a good locking without damaging the wall (a slight penetration of the legs into the wall is tolerated and even recommended for a tighter hold):



• HOLLOW WALL ANCHOR INSTALLATION:



• REMOVE THE BATTERY:

Battery is locked to the riveting tool with a spring.

To remove the battery, press the 2 unlock buttons **4** and slide the battery. Do not force it.

• BATTERY LEVEL INDICATOR:

4 lights on the battery panel allows you to check the remaining power. Press and hold the blue button **5** to check the battery level:

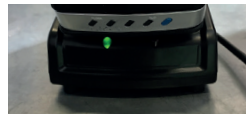
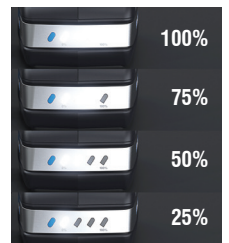
4 lights on : 100% remaining

3 lights on : 75% remaining

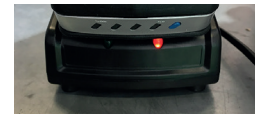
2 lights on : 50% remaining

1 light on : 25% remaining

The information on the battery panel can vary (+/- 5%) due to environmental conditions.



Green light on the charger: the battery is fully charged



Red light on the charger: the battery has to be charged

• LED LIGHTS:

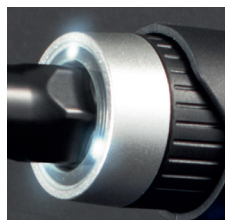
The tool is equipped with 3 powerful LED lights **7** to light up the working area.

Turn on the light only

Press the trigger half way to turn on the light. The lights will shutdown after 10 seconds.

Turn on the tool with the lights on

Press the trigger **3**. The lights turn on and remain on until 10 seconds after the trigger is released.



MAINTENANCE / TROUBLESHOOTING / SAFETY INFORMATION

See details and illustrations in user manual.



Beacon Industrial Estate - Weston road - Stafford ST18 0DG - Tel: 01785 246539 - sales@scellit.co.uk - www.scellit.co.uk